



# Brimpton Church of England Primary School

## EXCLUSION POLICY

Brimpton C of E Primary School

**Approval Date: Sept 2023**  
**Next Review Date: Sept 2025**

Brimpton Primary School  
Brimpton Lane  
Reading  
RG7 4TL

# Exclusion Policy

## Brimpton Church Of England Primary School

### Document Control

Version:	V2	Date Created	Sept 2022
Author:	HT	Date Modified	Sept 2023
Status:	<b>Active</b>	Frequency of Review	3 Years unless changes made FGB

Head Teacher	Sign & Date:	
Chair of Governing Body	Sign & Date:	

Date Approved:	Sept 2022		
Next Review Date:	Sept 2023 (due to updates)	Date Reviewed:	
Next Review Date:		Date Reviewed:	
Next Review Date:		Date Reviewed:	
Next Review Date:		Date Reviewed:	
Next Review Date:		Date Reviewed:	

To be read in conjunction with Behaviour Policy

This exclusion statement recognises the principles set out in our Aims as a Church of England Primary School, and in our Christian Ethos Statement. Brimpton Primary School seeks to avoid exclusions, endeavouring to uphold Christian values, including forgiveness. Exclusions will only take place for very serious incidents or when other strategies have been tried and failed over time.

In most cases exclusion will be the last resort after a range of measures have been tried to improve the pupil's behaviour and after a number of strategies have been put in place to address the inappropriate behaviour. This may have also exhausted possibilities suggested by the West Berkshire Behaviour Intervention Team (BIT).

The Headteacher and staff will identify pupils whose behaviour places them at risk of exclusion and will seek help from additional agencies to meet their individual needs (for example: BIT and Educational Psychology Team).

Fixed term and permanent exclusions are used only when other strategies and sanctions have not been effective over time or when there has been a single clear and serious breach of discipline:

Serious offences that might justify a pupil's exclusion include:

- Violence towards and adult or child (including a threat of serious violence)
- Racist verbal abuse
- Sustained bullying
- Frequent high level disruption to lessons
- Frequent high levels of non-compliance
- Frequent high levels of disrespect to any adults who work in the school

### **Exclusion**

Permanent Exclusion is a very serious matter. Only the Headteacher, or the Senior Teacher if the Headteacher is out of school for a long time, can permanently exclude a pupil.

The Headteacher may decide to permanently exclude a pupil only when he/she is sure that each individual situation has been fully investigated. The Headteacher will gather evidence and seek opinions and advice from colleagues. The views of the pupil will also be sought to gain a full picture before action is taken. If satisfied that, on the balance of probabilities, the pupil is likely to jeopardise the wellbeing of other members of the school community in the future, the Headteacher may exclude the pupil.

### **How do we know our excluded young people are safe?**

*Given that safeguarding is everyone's responsibility, and that pupils who are excluded from school are particularly vulnerable, all those working with the pupil or family, however tangentially, should check*

*with school staff, social workers, parents and other colleagues, to assure themselves of the pupil's safety whilst out of school.*

*Any concerns expressed should be passed on to CAAS in the usual manner.*

*Good practice would be to discuss safeguarding concerns with more than one person from the school, family and other colleagues so that a decision is not made based on one person's opinion.*

*If WBC's Exclusions Officer is involved he will record that he has discussed any safeguarding concerns with the school and others. If EWOs, EPs, SEN Dept, YOT and other colleagues are involved then they should routinely record, within their normal note-taking system, that safeguarding concerns have been discussed and acted upon if appropriate.*

*Schools should be encouraged to do the same whenever they exclude a pupil.*

*(West Berkshire Guidelines on good practice)*

## **Governors' responsibilities**

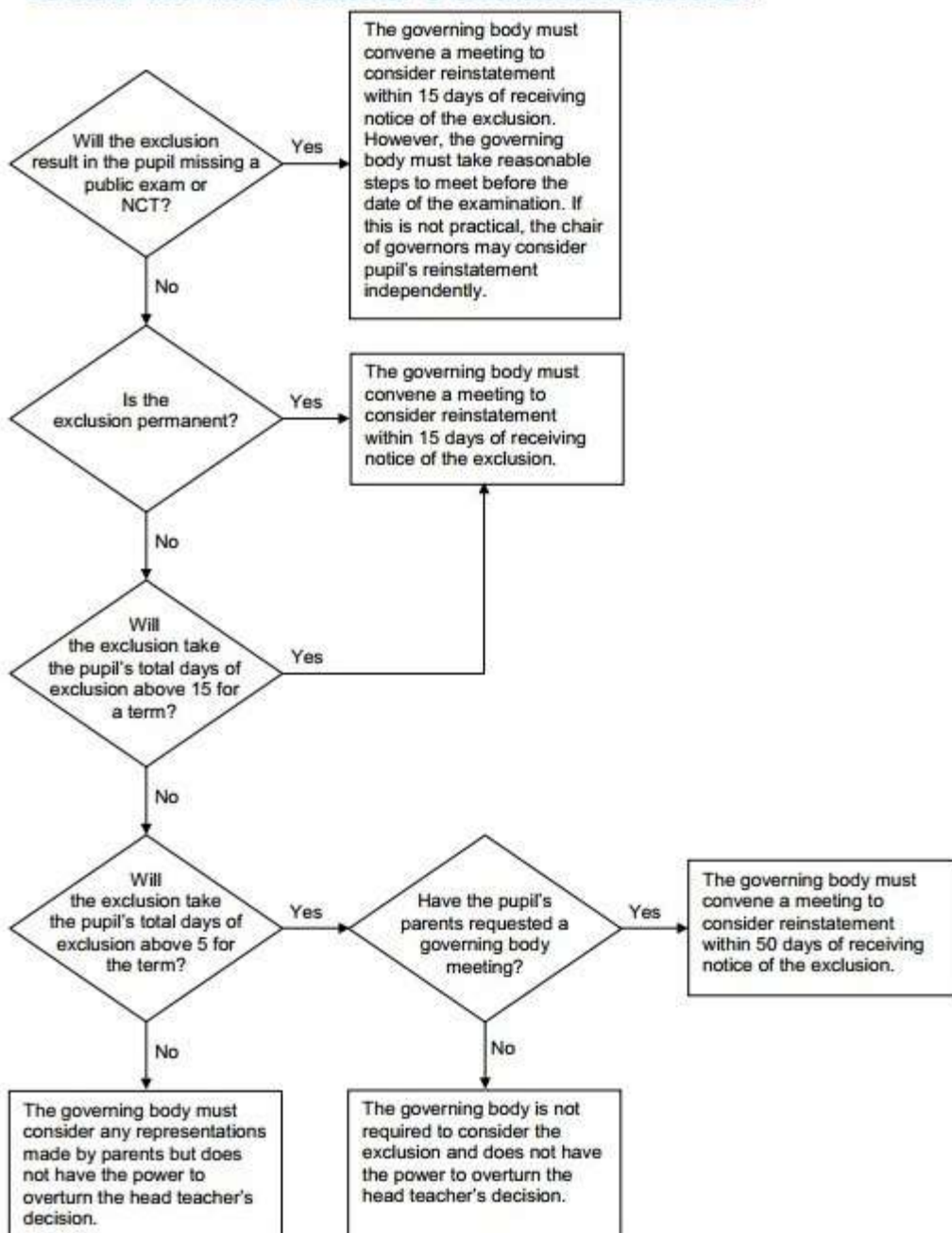
For fixed-period exclusions that do not bring a pupil's total number of days of exclusion to more than 5 in a term, the governing board must consider any representations made by parents, but it cannot direct the head teacher to reinstate the pupil and is not required to meet with the parents.

The governing board must convene a meeting to consider the headteacher's decision to exclude a pupil in the case of:

- All permanent exclusions
- All fixed-period exclusions of pupils who have been excluded for more than 15 school days in the term, or who will have been as a result of the exclusion
- All fixed-period exclusions that would result in a pupil missing a public examination or National Curriculum test
- All other fixed-period exclusions where a pupil would be excluded for more than 5 school days in a term, **and** their parents have made representations

This is set out in section 6.1 of the statutory guidance from the Department for Education (DfE)

## Annex A – A summary of the governing body’s duties to review the head teacher’s exclusion decision



The governing body may delegate its functions to consider an exclusion to a designated sub-committee. References to days mean 'school days'.